

Sage 300

Integrated Payment Processing for Every Business



• Simplified Payment Collection

Work seamlessly within the ERP you use every day. Accept customer payments within Sage 300 using integrated solutions from REPAY.

- Tokenized credit card data
- Level 3 interchange benefits
- Credit card and ACH processing
- No installation, maintenance or set up fees
- 24/7 live support

• Accept Payments in Sage 300

A gateway and processor, REPAY offers omni-channel B2B and B2C integrated payment solutions for every business. If you do not understand your bill, we can explain how you are currently priced.

Customers can utilize multiple payment methods to pay you anywhere, anytime. Every transaction posts back automatically to Sage 300 to streamline reconciliation and reduce manual errors.



**Scan this QR code to learn more
about REPAY's integration!**



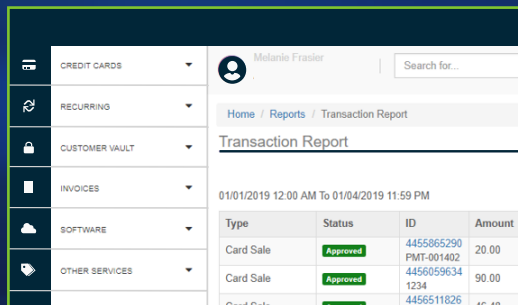
Avoid Manual
Entry



Reduce
Errors



Increase Cash
Flow



The screenshot shows the REPAY web interface. On the left is a sidebar with navigation links: CREDIT CARDS, RECURRING, CUSTOMER VAULT, INVOICES, SOFTWARE, and OTHER SERVICES. The main area displays a 'Transaction Report' for the period '01/01/2019 12:00 AM To 01/04/2019 11:59 PM'. It includes a search bar and a table of transactions.

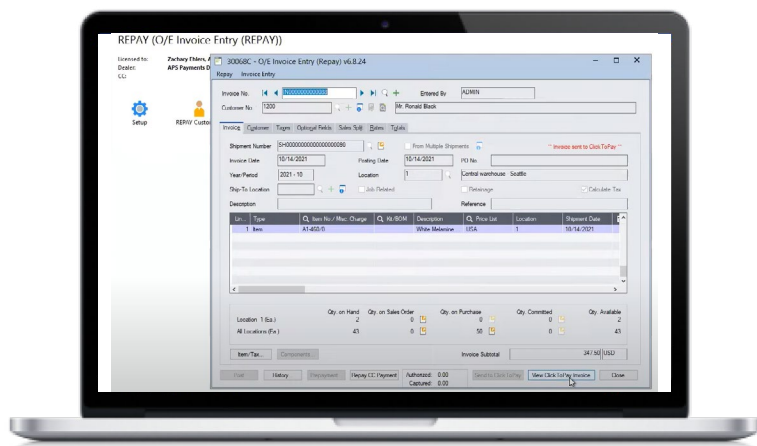
Type	Status	ID	Amount
Card Sale	Approved	4455865290 PMT-001402	20.00
Card Sale	Approved	4456059634 1234	90.00
Card Sale	Approved	4456511826	46.48

Protect Every Payment

Our platform is PCI-compliant and utilizes tokenization and encryption tools to enhance security. Store recurring payment information in our vault, not on your server.

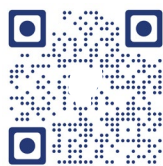
Qualify For Lower Interchange

Sending Level 3 data with every transaction helps you qualify for lower interchange rates on Visa and Mastercard B2B transactions. We automatically pass the data for you!



Get Paid Faster with ClickToPay

ClickToPay makes it easy for customers to pay invoices directly from Sage 300. Send invoices by email, and customers can pay instantly via a secure link with credit card or ACH. They can also create a profile to save payment details for quicker future checkouts.



Scan this QR code to learn more about REPAY's integration!